



LEEMIN
黎明液压

LUC、LUCA、LUCB系列滤油车 LUC、LUCA、LUCB PUSH CART FILTER SERIES

(一) 简介

液压技术的现代化导致了液压系统性能参数日趋于超高压、大流量和高精度，为确保液压系统的性能和可靠性，对油液的清洁度要求越来越高。

我公司研制的滤油小车，不仅能作为液压系统注入新油过滤的专用设备，而且还可以作为定期过滤系统介质中污染物的专用设备，它可以帮助你较好地处理液压系统的污染，延长液压元件的使用寿命，保证系统正常工作。

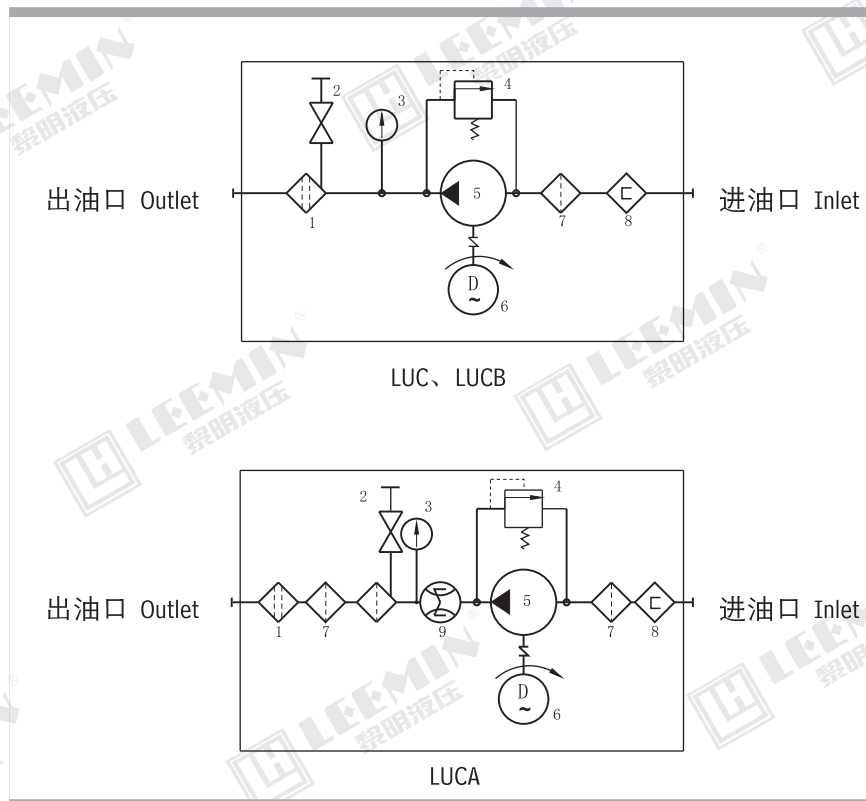
我公司生产的LUC、LUCA、LUCB系列滤油小车除具有性能可靠，结构紧凑，外形美观，保养维修和使用方便外，还具有较高的精度和低噪声等优点，精滤器内滤芯可根据用户不同需要，在3、5、10、20、30 μm 中进行自由选择，只需调换不同过滤精度的滤芯就可达到不同精度的过滤效果，滤油小车仅滤除油液中的污物，对油液的各项技术指标均无影响。

INTRODUCTION

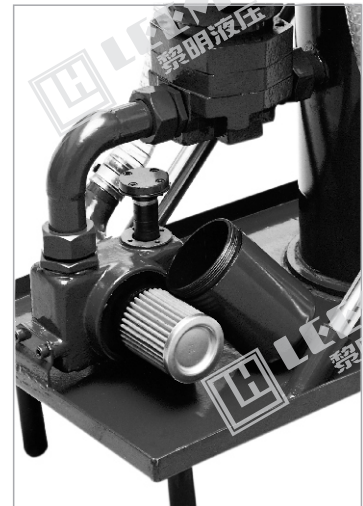
LUC、LUCA and LUCB series of pushcart filters are a special filtration device not only for filtering the oil flowing to a tank but also For filtering the oil in hydraulic system. These kinds of filters are made into good structure, easy using and long service life and also have high filtration low noise. As required you may choose different filter element from 3 μm to 30 μm filtration. They are also used as a by-pass filter outside a hydraulic system.



(二) 油路图 DRAWING OF OIL CIRCUIT



1. 精过滤器 Fine filter
2. 排气阀 Discharge valve
3. 压力表 Pressure gauge
4. 安全阀 Safety valve
5. 泵 Pump
6. 电动机 Motor
7. 粗过滤器 Rough filter
8. 磁性过滤器 Magnetic filter
9. 流量计 Flow gauge





LEEMIN
黎明液压

(三)型号说明: MODEL CODE

LUC: 精细滤油车
Fine pushcart filter
LUCA: 五级过滤精细滤油车
5 class fine pushcart filter
LUCB: 可携带油筒精细滤油车
With jerrican fine pushcart filter

□ · □ — □ × □ □

省略: 过滤材料为纸质 Omit if use filter media is paper
Q: 过滤材料为化纤 Filter media is fibre
W: 过滤材料为网式 Filter media is mesh

过滤精度 Filtration accuracy(μm)

公称流量 Flow rate(L/min)

BH: 水-乙二醇 Water-glycol

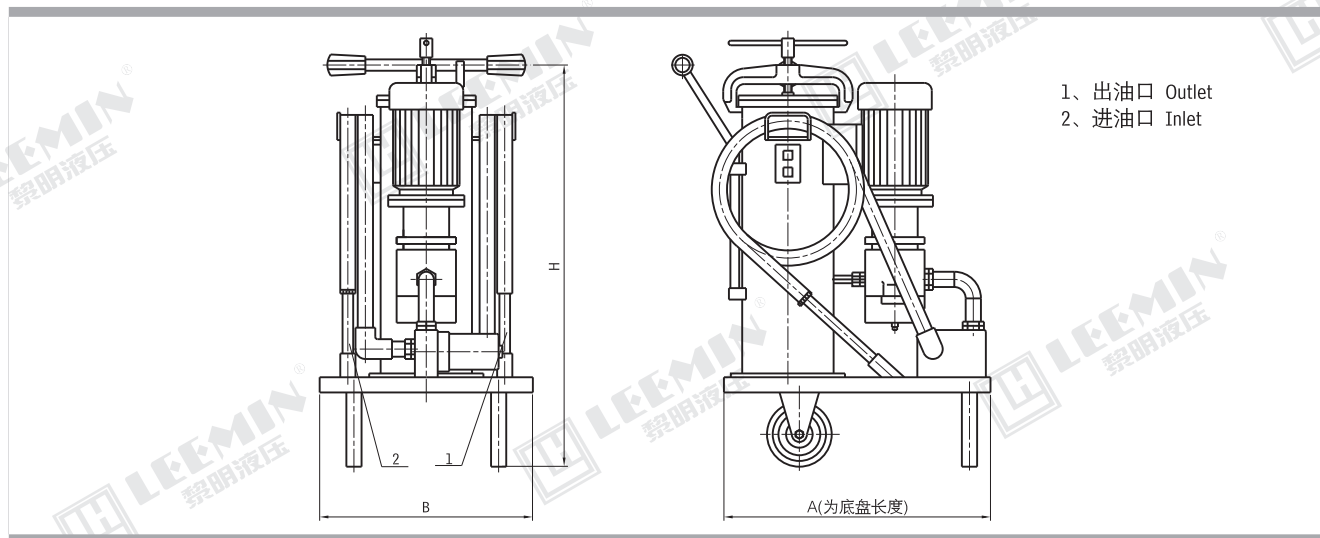
省略: 一般液压油 Omit if use hydraulic oil

(四)技术参数 TECHNICAL DATA

型号 Model	公称流量 Flow (L/min)	粗滤精度 Rough Filtr. (μm)	精滤精度 Fine Filtr. (μm)	原始压力损失 Initial ΔP (MPa)	磁铁吸力 Attraction of magnet (N)	电机功率 Power of motor(Kw)	电机电压 Voltage (V)	重量 Weight (kg)
LUC-16 × * #	16	100	3 5 10 20 30	< 0.02	2	0.37	AC:380	60
LUC-40 × * #	40					0.75		90
LUC-63 × * #	63					1.1		100
LUC-100 × * #	100					1.5		110
LUC _B ^A -16 × * #	16					0.37		
LUC _B ^A -40 × * #	40					0.75		
LUC _B ^A -63 × * #	63					1.1		
LUC _B ^A -100 × * #	100					1.5		

(五)外形尺寸 SIZE

1.LUC 系列
LUC series

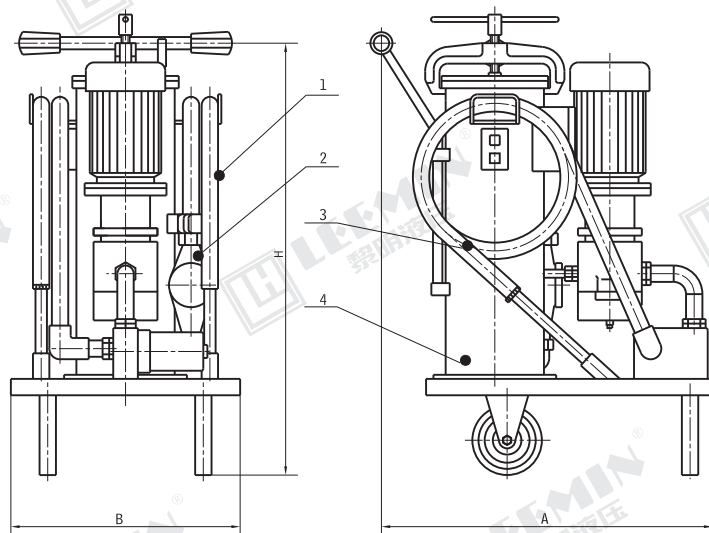


型号 Model	尺寸 Size (mm)		
	H	A	B
LUC-16 × *	920	470	350
LUC-40 × *	930	560	400
LUC-63 × *	960	560	400
LUC-100 × *	960	560	400



LEEMIN
黎明液压

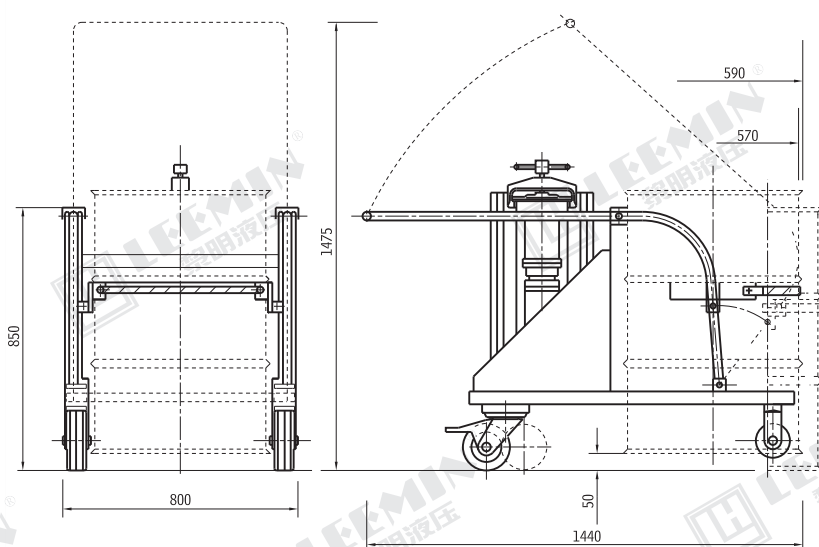
2. LUCA 系列 LUCA Series



- 1、出油口 Outlet
- 2、流量计 Flow gauge
- 3、吸油口 Inlet
- 4、三级过滤器 3 Class filter

型 号 Model	尺 寸 Size (mm)		
	H	A	B
LUCA-16 × *	1060	650	450
LUCA-40 × *	1080	700	500
LUCA-63 × *	1120	740	500
LUCA-100 × *	1120	740	500

3. LUCB 系列 LUCB Series





(六)用户自配附件与易损备件 SPARE PARTS

型 号 Model	备 件 名 称 Name of spare parts			
	粗过滤滤芯型号 Model of rough filter element	精过滤滤芯型号 Model of fine Filter element	骨架式油封Seal(3) HG4-692-67	PVC增强软管(长2m) (内径)mm
LUC-16 × *	CWU-16 × 100-J	CZX-16 × * #	20 × 40 × 10	吸油, 回油 φ 19
LUC-40 × * /LUCB-40 × *	CWU-40 × 100-J	CZX-40 × * #	25 × 45 × 10	吸油 φ 32, 回油 φ 25
LUC-63 × * /LUCB-63 × *	CWU-63 × 100-J	CZX-63 × * #	25 × 45 × 10	吸油 φ 32, 回油 φ 25
LUC-100 × * /LUCB-100 × *	CWU-100 × 100-J	CZX-100 × * #	30 × 50 × 10	吸油 φ 32, 回油 φ 25

备 件 名 称 Name of spare parts						
型 号 Model	粗过滤滤芯型号 Model of rough filter element	三级过滤筒 Filter Bnowl			骨架式油封(3) Seal HG4-692-67	PVC增强软管(长2m) (内径)mm
		粗滤器滤芯 一级滤芯型号 Model of rough filter element I	粗滤器滤芯 二级滤芯型号 Model of rough filter element II	精过滤滤芯型号 Model of fine filter element		
LUCA-16 × *	CWUA-16 × 100-J	CXXA1-16 × 80	CXXA2-16 × 50	CZXA-16 × * #	20 × 40 × 10	吸油, 回油 φ 19
LUCA-40 × *	CWUA-40 × 100-J	CXXA1-40 × 80	CXXA2-40 × 50	CZXA-40 × * #	25 × 45 × 10	吸油 φ 32, 回油 φ 25
LUCA-63 × *	CWUA-63 × 100-J	CXXA1-63 × 80	CXXA2-63 × 50	CZXA-63 × * #	25 × 45 × 10	吸油 φ 32, 回油 φ 25
LUCA-100 × *	CWUA-100 × 100-J	CXXA1-100 × 80	CXXA2-100 × 50	CZXA-100 × * #	30 × 50 × 10	吸油 φ 32, 回油 φ 25

注: (1) *表示过滤精度。若使用介质为水—乙二醇, 公称流量63L/min, 过滤精度5 μ m, 过滤材质为纸质时, 滤油车的型号为LUC · BH-63 × 5或LUCA · BH-63 × 5, 精滤器滤芯的型号为CZX · BH-63 × 5或CZXA · BH-63 × 5。#表示过滤材料。省略为纸质过滤材料, Q为玻璃纤维材料, W为网式过滤材料。

(2) 为了确保滤油车额定流量, 并能正常使用, 用户自配油管的内径应符合上表规格; 并注意, 在工作中吸油管不得有压扁现象, 以免油泵损坏, 吸油高度差 < 500mm。吸油软管不得加长; 回油软管不得长于8m。

(3) 指油泵轴封。

Note: (1) * is Filtration accuracy. If the fluid is water-glycol, flow rate 63L/min filtration accuracy 5 μ m, filter media is paper, the model of pushcart filter is LUC · BH-63 × 5 or LUCA · BH-63 × 5, the model of fine filter element is CZX · BH-63 × 5 or CZXA · BH-63 × 5. # is filter media. Omit if Filter media is paper; Q: Filter media is fibre; w: Filter media is mesh.

(2) To ensure the flow of pushcart filter, the customer should select the inside diameter of the hose according to the above table form, and not flatten the hose when working. The height of suction oil should less than 500mm. The suction pipe can not be prolonged; the return pipe can not be longer than 8m.

(3) It means seal of pump shaft.

(七)滤油车使用与保养维修

使用与保养维修

(1) 滤油车在启动时, 应注意不能使油泵反转, 以免引起油泵轴封吹出导致吸入空气。

(2) 滤油车在使用过程中, 油泵可能吸入空气, 影响油泵流量, 为了达到滤油车的额定流量以及保证精细滤芯的正常工作, 应及时打开排气阀, 以便将滤筒中的空气排净(即排气阀出油后), 排完空气之后及时关闭排气阀。

(3) 滤油车使用一段时间后, 如因污染物严重堵塞粗过滤滤芯表面而使吸油不畅, 引起油泵噪声过大, 应停机取出滤芯清洗。

(4) 精细滤芯在使用一段时间后, 易被污染物逐渐堵塞, 引起滤筒压力升高, 当压力达到0.4MPa时, 需及时更换精细滤芯。

(5) 使用的吸油、出油软管应随时保持清洁。

(6) 如果滤油车抽不出油, 请检查认定:

A、油泵转向是否正确;

B、油箱至吸油口间的各零部件密封是否可靠, 吸油口是否离开油面或油液已吸完;

C、粗滤器滤芯是否堵塞。

(7) 滤油车流量显著减少, 请检查认定:

A、粗、精过滤滤芯是否堵塞严重;

B、油泵轴油封是否磨损或因反转而造成吹出。

(8) 过滤压力突然下降, 请检查精细滤芯是否被击穿。

USAGE AND MAINTENANCE

(1) Avoiding the possible counter rotation of the oil pump while starting the machine, otherwise it may lead to the out blown of the axle seal and entering of air.

(2) Air might be introduced into the machine during the operation and affect the oil flow. To ensure the rated flow and normal operation of the fine filter element, the discharge valve should be opened in time to release the air until oil can be seen at the outlet of the discharge valve, then close the discharge valve closed.

(3) After a certain period of peration, coarse cleaner could be gradually contaminated and noise of pump might occur, you should stop the machine in order to clean the filter element.

(4) Dirt might stick to the elements of fine filter, causing a rise of the pressure in the filter bowl. When the pressure hits 0.4MPa, the elements should be the changed in time.

(5) The suction and oil outlet tube should always be kept clean.

(6) Should the pushcart filter fail to pump oil, please check:

a. The rotating direction of the pump;

b. Whether the sealings between the tank and oil inlet are properly; the oil inlet is above the oil surface or oil runs out;

c. If the elements of rough filter are stuck.

(7) If the oil flow distinctly reduced, please check:

a. Whether the elements of rough and fine filters are stuck with filth.

b. Whether an out blown of the axle seal has occurred due to wear or counter rotation.

(8) If a sudden pressure drop occurs, please check whether the elements of fine filter have been damaged.