



LEEMIN  
黎明液压

## SRFA系列双筒微型直回式回油过滤器

### SRFA DUPLEX TANK MOUNTED MINI-TYPE RETURN FILTER SERIES

#### (一) 简介

该过滤器是由两只单筒过滤器、换向阀、旁通阀、发讯器、扩散器等组成。它被安装在油箱顶部，可在系统不停机的情况下更换滤芯，适用于连续工作的液压系统回油精过滤，用来滤除液压系统中诸元件磨损产生的金属粉末以及密封件的橡胶杂质等，使流回油箱的油液保持清洁，以利于系统中的油液循环使用。

当一只过滤器的滤芯堵塞致使进出口压差为0.35MPa时，发讯器发讯，这时，转动换向阀，使备用滤油器工作，然后更换已堵塞的滤芯。

在因故不能及时更换已堵塞滤芯，使进出口压差进一步上升到0.4MPa时，旁通阀自动开始工作，从而保护滤芯及系统正常工作，但用户应尽快更换滤芯。

因设计采用了直回滤油，从而更换滤芯或向油箱加油变得非常方便，只需旋开过滤器滤盖即可更换滤芯或向油箱加油，每个滤头设有2只M18×1.5油口，可在任何一处安装发讯器。

扩散器设置在回油筒体底部，能使回油的介质平稳地流入油箱内，不易产生气泡，减少了空气的重新进入，并减弱已沉积污染物的骚动。

滤芯采用新型化纤过滤材料，具有过滤精度高、通油能力大、原始压力损失小、纳污量大等优点，其过滤精度以绝对过滤精度标定，过滤比 $\beta_3$ 、5、10、20 $\geq 200$ ，过滤效率 $\eta \geq 99.5\%$ ，符合ISO标准。

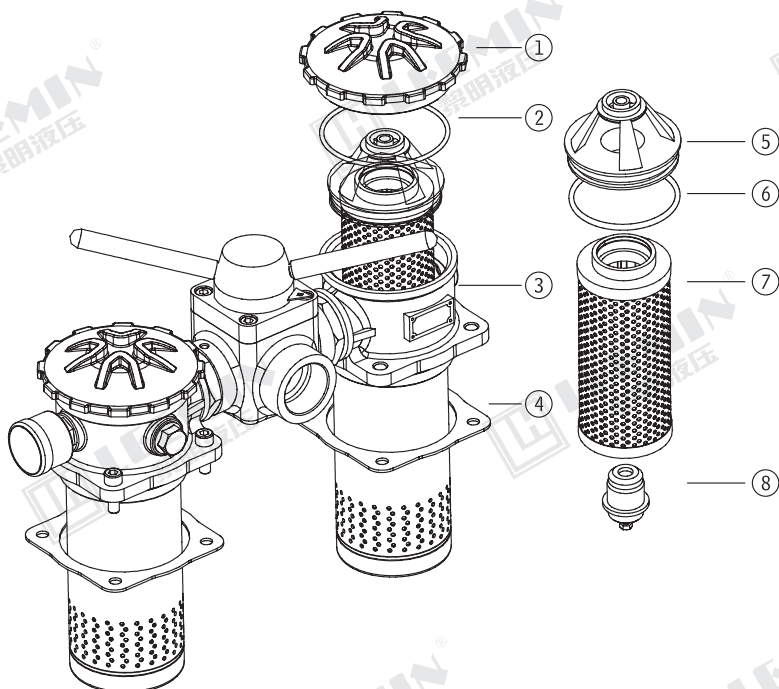
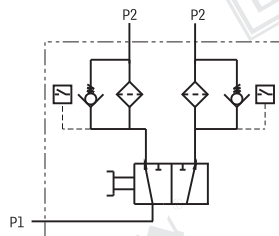
#### INTRODUCTION

The SRFA series filter is composed of two single bowl filters, a 2-position 3-way directional valve, by-pass valve, indicator and diffuser. It is simple in structure and easy to use. It is mounted on tank top; there is by-pass valve and contamination indicator in it, for protecting the hydraulic system safety. The feature of this filter allows continuous operation even during replacing element, which is clogged by contaminant. When the filter element is clogged by contaminant that results in the pressure reaching to 0.35MPa the indicator will give signals. At this time, turn the directional valve in order to make the other filter work then change the element.

If the filter can't be changed in time that make the pressure reaches to 0.4MPa, then the by-pass valve will open to keep the system safety.

The diffuser is installed under the filter bowl, which makes the medium flow stably into the tank.

The filter element is with high filtration accuracy, low initial pressure loss and high dirt holding capacity. Filter ratio  $\beta_{3,5,10,20} \geq 200$ , filter efficiency  $\eta \geq 99.5\%$ , and fit the ISO standard.



序号 Number	名称 Name	说明 Note
1	滤盖 Cap	
2	O形密封圈 O-ring	易损件 Wearing Parts
3	壳体 Housing	
4	密封垫 Seal	易损件 Wearing Parts
5	滤芯定位座 Element locating seat	
6	O形密封圈 O-ring	易损件 Wearing Parts
7	滤芯 Element	易损件 Wearing Parts
8	旁通阀 By-pass valve	



LEEMIN  
黎明液压

## (二) 型号说明 MODEL CODE

SRFA · □ - □ × □ □ - □

双筒微型直回式回油过滤器

Duplex tank mounted mini-type return filter

BH:介质为水—乙二醇 Water-glycol

省略: 介质为一般液压油 Omit if use hydraulic oil

公称流量: Flow rate:(L/min)

E:电子模拟发讯器 Electronic analog indicator  
Y:带CYB-I型发讯器 With CYB-I indicator ≤DC24V  
C:带CY-II型发讯器 With CY-II indicator ≤220V  
省略: 不带发讯器 Omit if without indicator

L:进油口为螺纹连接 Threaded connection

F:进油口为法兰连接 Flanged connection

过滤精度: Filtration accuracy (μm)

注: 用户订购过滤器需配【电子模拟发讯器】时, 请与我公司技术部联系。

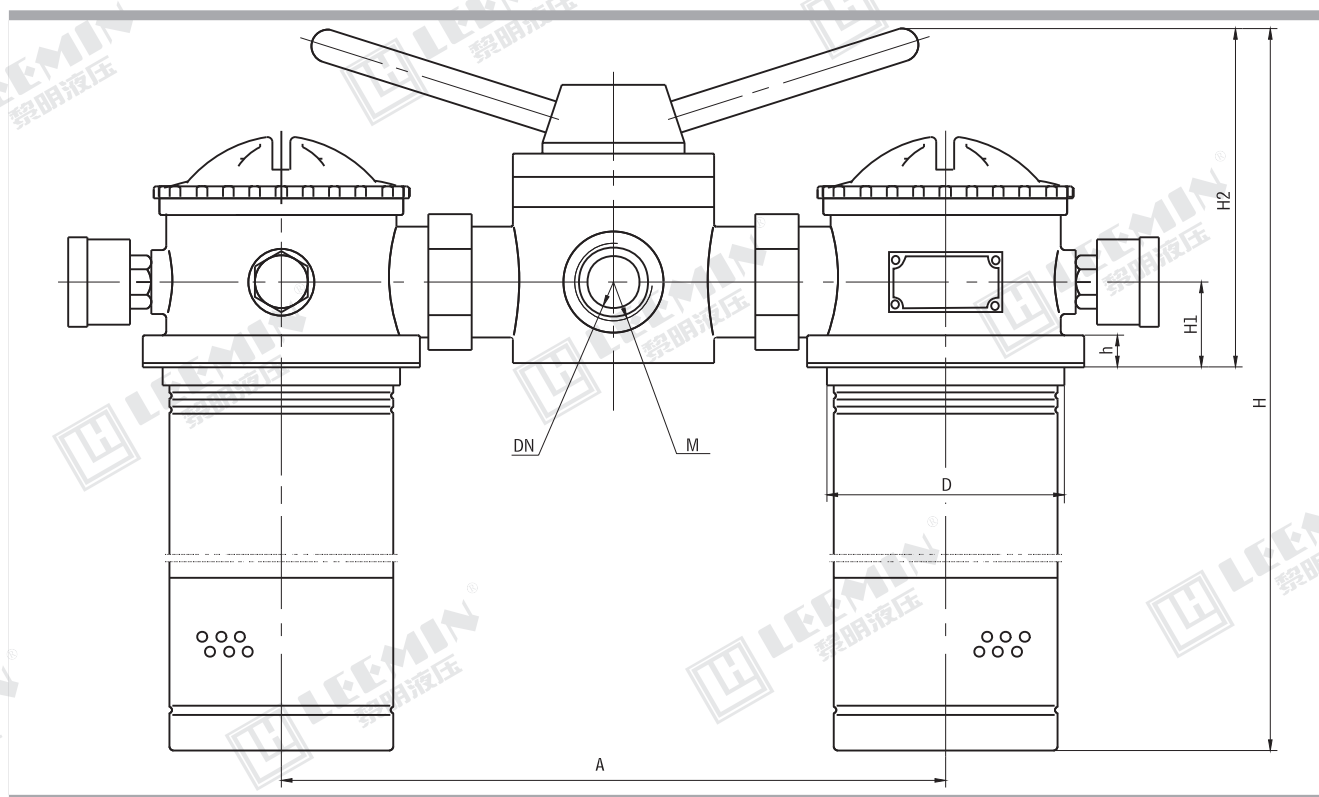
## (三) 技术参数 TECHNICAL DATA

型 号 Model	公称流量 Flow rate (L/min)	过滤精度 Filtr. (μm)	通 径 Dia. (mm)	公称压力 Press. (MPa)	压力损失 Pressure loss(MPa)		发讯装置 Indicator		重 量 Weight (Kg)	连接方式 Connect	滤芯型号 Model of element
					Initial	Max.	(V)	(A)			
SRFA-25X * L-Y	25	3	20	1.6	≤0.08	0.35	12	2.5		螺 纹 Thread	SFAX-25 × *
SRFA-40X * L-Y	40		20								SFAX-40 × *
SRFA-63X * L-Y	63		32								SFAX-63 × *
SRFA-100X * L-Y	100	5	32				24	2			SFAX-100 × *
SRFA-160X * F-Y	160		50								SFAX-160 × *
SRFA-250X * F-Y	250	10	50				36	1.5			SFAX-250 × *
SRFA-400X * F-Y	400	20	65								SFAX-400 × *
SRFA-630X * F-Y	630	30	90				220	0.25		法 兰 Flange	SFAX-630 × *
SRFA-800X * F-Y	800		90								SFAX-800 × *
SRFA-1000X * F-Y	1000		90								SFAX-1000 × *

注: \*为过滤精度。若使用介质为水—乙二醇, 使用压力1.6MPa, 公称流量63L/min, 过滤精度10 μm, 带CYB-I发讯器。则过滤器型号为SRFA · BH-63 × 10L-Y, 滤芯型号为SFAX · BH-63 × 10

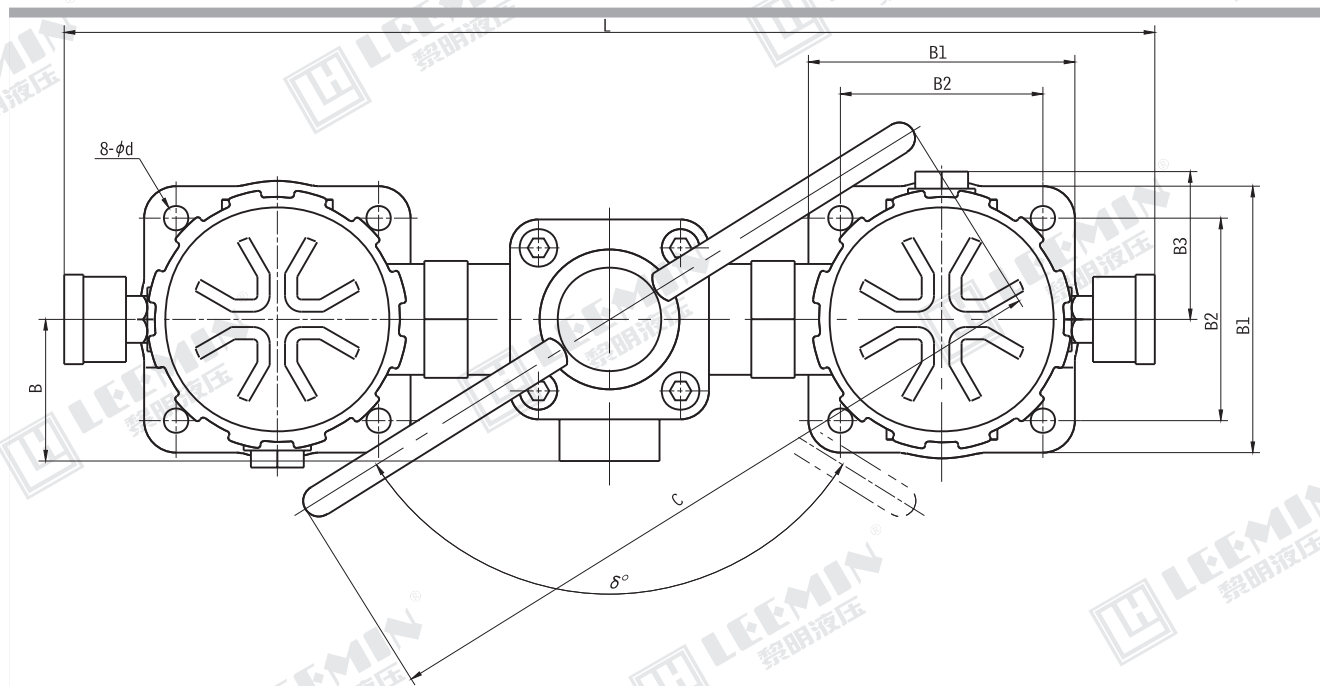
Note: \*is represents filtration. If the filter fluid is water-glycol, usage pressure 1.6MPa, flow rate 63L/min, filtration accuracy 10 μm and the filter equipped with CYB-I indicator. The model of the filter is SRFA · BH-63 × 10L-Y, the model of element is SFAX · BH-63 × 10

## (四) 安装外形尺寸 MOUNTING SIZE



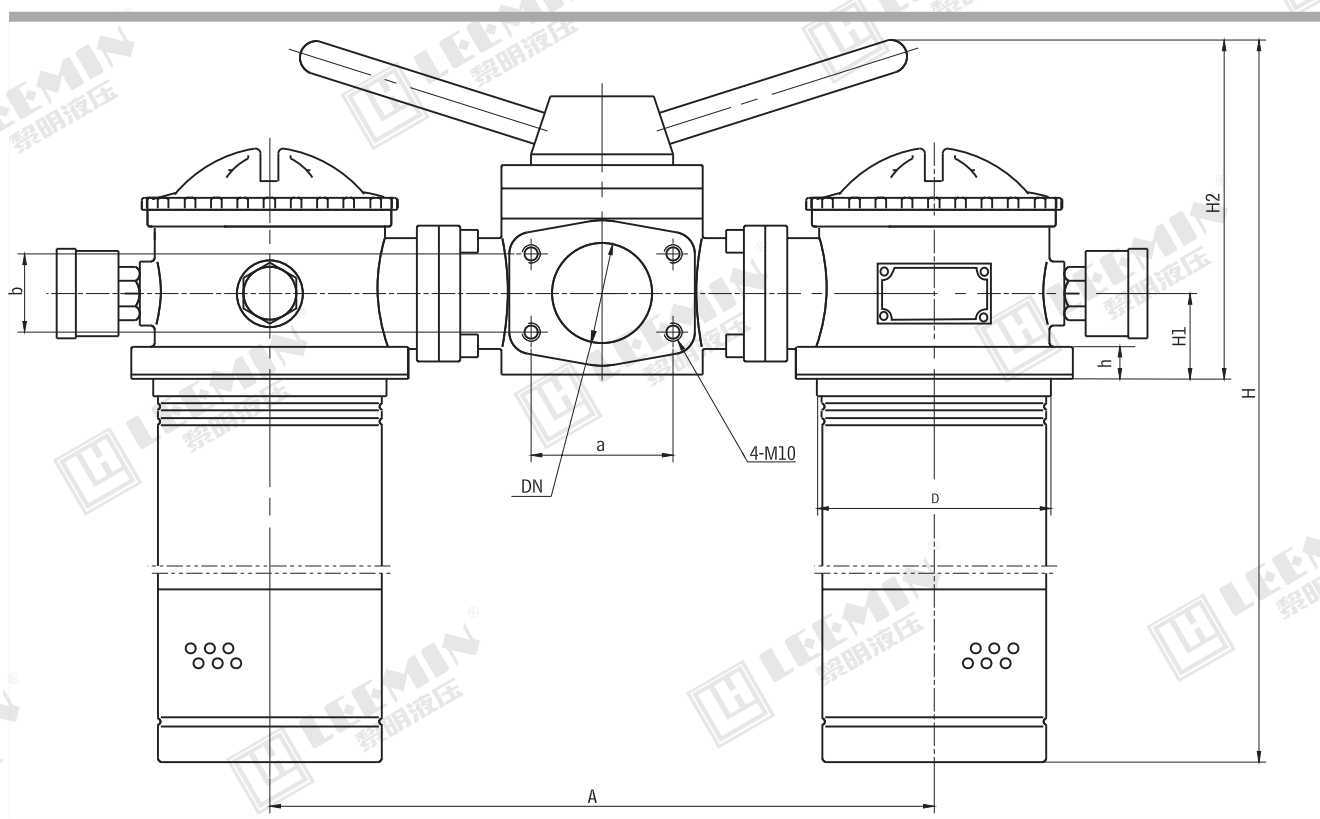


**LEEMIN**  
黎明液压



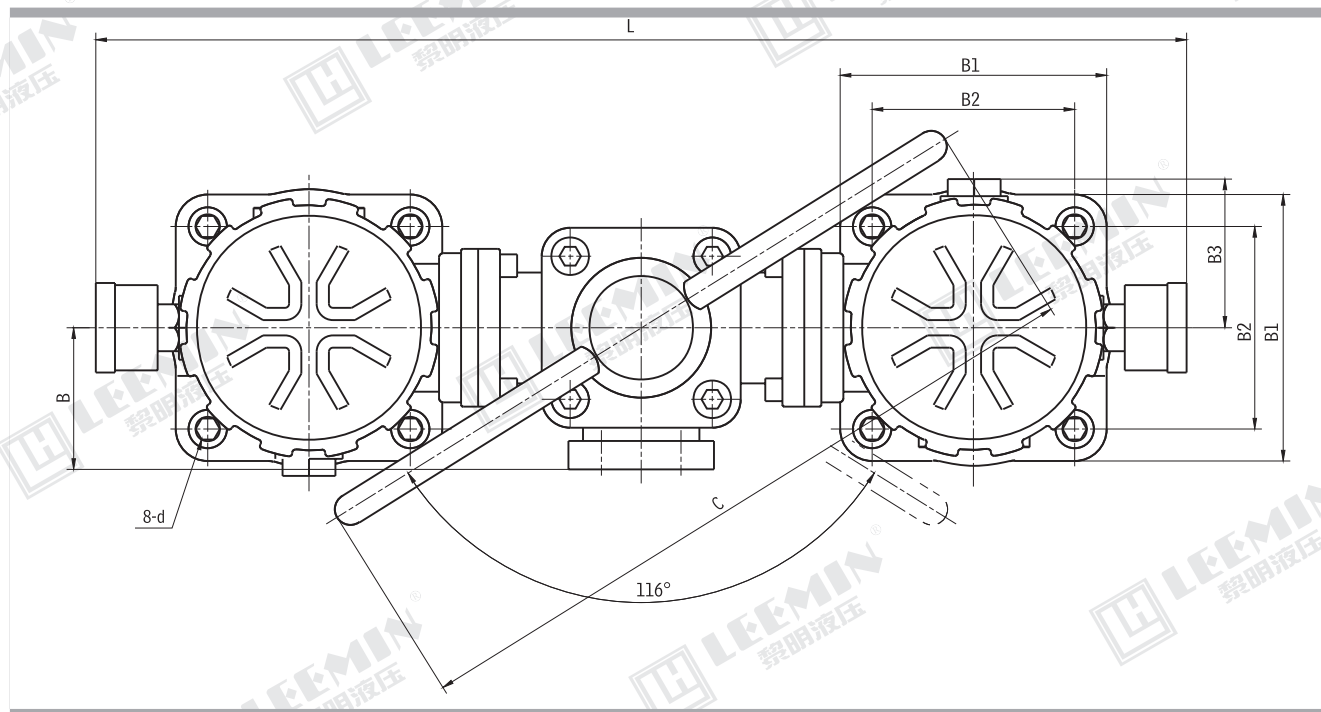
单位 Unit:mm

型号 Model	DN	M	H1	B	B1	B2	B3	d	A	D	L	H	H2	C	h	δ
SRFA-25 × * L - $\begin{smallmatrix} C \\ Y \end{smallmatrix}$	20	M27 × 2	25	53	90	70	53	9	224	75	388	249	122	265	10	135
SRFA-40 × * L - $\begin{smallmatrix} C \\ Y \end{smallmatrix}$												280				
SRFA-63 × * L - $\begin{smallmatrix} C \\ Y \end{smallmatrix}$	32	M42 × 2	33	60	110	85	61	9	250	95	430	320	138	275	12	124
SRFA-100 × * L - $\begin{smallmatrix} C \\ Y \end{smallmatrix}$												348				





LEEMIN  
黎明液压



单位Unit:mm

型号 Model	DN	a	b	H1	B	B1	B2	B3	d	A	D	L	H	H2	C	h	Q
SRFA-160 × * F - $\frac{C}{Y}$	50	70	40	40	81	125	95	67	$\phi 13$	320	110	566	482	160	350	15	60
SRFA-250 × * F - $\frac{C}{Y}$													582				
SRFA-400 × * F - $\frac{C}{Y}$	65	90	50	55	90	140	110	76	$\phi 13$	370	130	580	664	197	400	15	73
SRFA-630 × * F - $\frac{C}{Y}$	90	120	70	70	115	170	140	93	$\phi 13$	450	160	694	743	248	545	18	102
SRFA-800 × * F - $\frac{C}{Y}$													853				
SRFA-1000 × * F - $\frac{C}{Y}$													1033				

注：本产品所需的进油口法兰盘，密封件等配件与本产品配套提供，用户需准备好外径  $\phi Q$  管子以供焊接。

Note: the inlet flange, seal, screw of this series will be supplied by our plant, The customer only need weld the steel tube  $\phi Q$ .