



LEEMIN
黎明液压

CWU系列磁性过滤器 CWU MAGNETIC FILTER SERIES

CWU-10X100B 磁性过滤器用于精密车床中润滑油的过滤，产品外壳为有机玻璃，为滤除加工中产生的超细铁屑粉末，滤芯中装了永久磁铁。

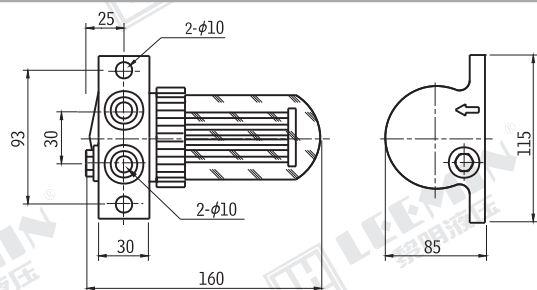
CWU-A25X60 磁性过滤器用于精密机床中主轴箱等润滑油的过滤，滤芯中装有永久磁铁，滤材为不锈钢丝网，便于清洗。

There are two models in this series. CWU-10X100B magnetic filter is used in the lubricating system of precision lathe. Filter element is made of stainless steel wire Mesh which can keep the system clean.

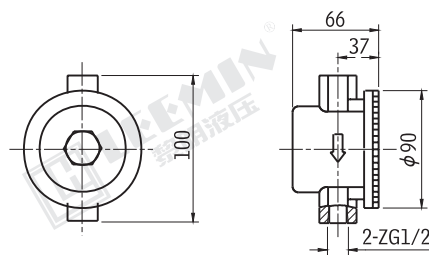
CWU-A25X60 filter is used in the head box of precision lathe. There is a permanent magnet in the core of element the filter, media is made of stainless steel wire mesh.



型 号 Model	压力Pressure (MPa)	流量 Flow (L/min)	过滤精度Filtr. (μ m)	温 度 Temp.
CWU-10X100B	0.5	10	100	$50 \pm 5^{\circ}\text{C}$
CWU-A25X60	1.6	25	60	



CWU-10X100B



CWU-A25X60