



注：用户订购过滤器需配【电子模拟发讯器】时，请与我公司技术部联系。



LEEMIN
黎明液压

(三)技术参数 TECHNICAL DATA 1.ZU-A、QU-A、WU-A系列过滤器 1.ZU-A、QU-A、WU-A filter series

型 号 Model	通 径 Dia. (mm)	公称流量 Flow rate (L/min)	过滤精度 Filtr. (μ m)	公称压力 Press. (MPa)	压力损失 Pressure loss(MPa)		旁通阀开启压力 By-pass setting (MPa)	发讯装置 功率 Indicator power	重 量 Weight (Kg)	连接方式 Connect	滤芯型号 Model of element
					Initial	Max					
<input type="checkbox"/> U-A10 × * P	10	10	3	1.6	0.05	0.35	0.4	24V/48W 220V/50W	2.6	管式 Thread	TZX ₂ -10 × * #
<input type="checkbox"/> U-A25 × * P	15	25							3.2		TZX ₂ -25 × * #
<input type="checkbox"/> U-A40 × * P	20	40							3.6		TZX ₂ -40 × * #
<input type="checkbox"/> U-A63 × * P	25	63			0.07				4.8		TZX ₂ -63 × * #
<input type="checkbox"/> U-A100 × * P	32	100							5.8		TZX ₂ -100 × * #
<input type="checkbox"/> U-A160 × * P	40	160							6.7		TZX ₂ -160 × * #
<input type="checkbox"/> U-A250 × * FP	50	250	5		0.12				9.5	法兰 Flange	TZX ₂ -250 × * #
<input type="checkbox"/> U-A400 × * FP	65	400							14.4		TZX ₂ -400 × * #
<input type="checkbox"/> U-A630 × * FP	80	630							22.3		TZX ₂ -630 × * #
<input type="checkbox"/> U-A800 × * FP	90	800	10		0.15					板 式 Plate	TZX ₂ -800 × * #
<input type="checkbox"/> U-A1000 × * FP	100	1000	20								TZX ₂ -1000 × * #
<input type="checkbox"/> U-A25 × * BP	20	25	30		0.05				3.2		TZX ₂ -25 × * #
<input type="checkbox"/> U-A40 × * BP		40							3.5		TZX ₂ -40 × * #
<input type="checkbox"/> U-A63 × * BP	32	63							0.07		3.9
<input type="checkbox"/> U-A100 × * BP		100			6.2						TZX ₂ -100 × * #
<input type="checkbox"/> U-A160 × * BP	38	160			0.12						7.0
<input type="checkbox"/> U-A250 × * BP	50	250							10.0		TZX ₂ -250 × * #
<input type="checkbox"/> U-A400 × * BP	65	400			0.15				15.4		TZX ₂ -400 × * #

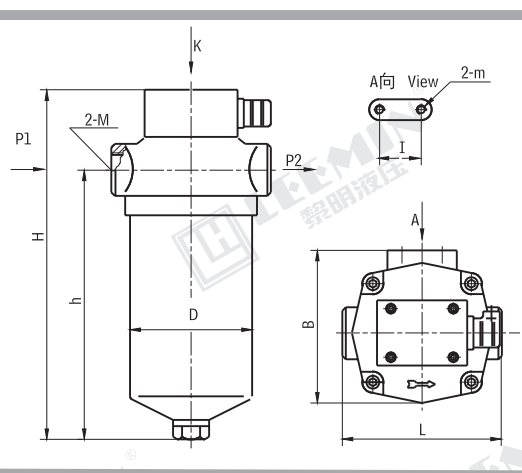
注: *为过滤精度, #表示过滤材料, 若使用介质为水—乙二醇, 使用压力1.6MPa, 公称流量63L/min, 滤材为纸质, 带发讯器, 则过滤器型号为: ZU · BH — A63 \times P, 滤芯型号为TZX₂ · BH-63 \times *. 滤材为玻纤, 过滤精度为10~15 μ m, 带发讯器, 则过滤器型号为: Q₃U-A63 \times P, 滤芯型号为: TZX₂-63*Q。滤材为玻纤, 过滤精度为3~5 μ m, 带发讯器, 则过滤器型号为: Q₃U-A63 \times P, 滤芯型号为: TZX₂-63*Q。滤材为金属网, 带发讯器, 则过滤器型号: WU-A63 \times P, 滤芯型号为: TZX₂ · BH-63 \times *W。

Note: * is represents filtration, # is filter media If the filter fluid is water-glycol, usage pressure 1.6MPa, flow rate 63L/min, filter media is paper, the filter equipped with indicator, the model of the fi-ter is ZU · BH — A63 \times P . that of the element is TZX₂ · BH — H63 \times *, if filter media is fibre and filtration 10~15 μ m, and the filter equipped with indicator, the model of the filter is Q₃U-A63 \times P, that of the element is TZX₂-A63 \times *Q, if filter media is fibre and filtration 3~5 μ m, and the filter equipped with indicator, the model of the filter is Q₃U-A63 \times P, that of the element is TZX₂-63 \times *Q. if filter media is wire mesh, and the filter equipped with indicator, the model of the filter is WU · BH-A63 \times P, that of the element is TZX₂ · BH-63 \times *W.

(四) 安装外形尺寸 MOUNTING SIZE

1.管式: Threaded connection

型 号 Model	尺寸 Size (mm)							
	H	h	L	B	D	I	M	m
Z Q U-A10 × *p W	199	152	104	102	φ 70	30	M18 × 1.5	M6
Z Q U-A25 × *p W	239	182	120	110	φ 89		M22 × 1.5	
Z Q U-A40 × *p W	299	242					M27 × 2	
Z Q U-A63 × *p W	322	254	146	131	φ 109	55	M33 × 2	M8
Z Q U-A100 × *p W	422	358	150				M42 × 2	
Z Q U-A160 × *p W	449	380	170				148	





LEEMIN
黎明液压

2. 法兰式: Flanged connection

Technical drawing of a vertical industrial machine, showing front, side, and top views with dimensions.

Front View Dimensions:

- Total Height: H
- Body Height: h
- Top Flange Thickness: $2-d$
- Port Diameter: $P1$

Side View Dimensions:

- Base Width: ϕ
- Mounting Holes: $4-M$

Top View (K向 View) Dimensions:

- Base Length: L
- Base Width: B
- Inner Width: b
- Central Feature Diameter: ϕ
- Dimension $2-m$ is also indicated.

型 号 Model	尺寸 Size (mm)								
	H	h	L	B	b	D	m	ϕ	M
$\begin{matrix} Z \\ Q \\ W \end{matrix} \text{ U-A250} \times *FP$	561	485	182	166	115	$\phi 150$	M10	74	M6
$\begin{matrix} Z \\ Q \\ W \end{matrix} \text{ U-A400} \times *FP$	706	625	196	176	140	$\phi 163$	M12	94	M8
$\begin{matrix} Z \\ Q \\ W \end{matrix} \text{ U-A630} \times *FP$	846	750	224	212	160	$\phi 186$	M12	115	M10
$\begin{matrix} Z \\ Q \\ W \end{matrix} \text{ U-A800} \times *FP$	1024	936	260	250	180	$\phi 212$	M12	125	M12
$\begin{matrix} Z \\ Q \\ W \end{matrix} \text{ U-A1000} \times *FP$	1094	1001						135	

3. 板式 Plated connection

注: 安装螺钉建议选用GB/T70.1-2000	

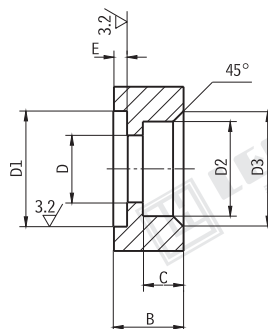
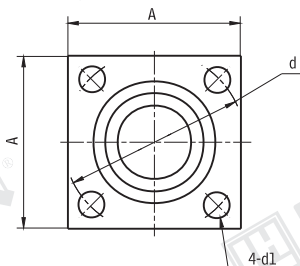
型 号 Model	尺寸 SIZE(mm)															
	H	h	L	B	b	D	I	n	E	F	C	C1	ϕ d1	ϕ d2	ϕ d3	ϕ d4
Z Q U-A25X*BP W	202	182	132	104	17	95	116	58	30	10	20	10	28	20	11	7
Z Q U-A40X*BP W	262	242														
Z Q U-A63X*BP W	290	254	160	127	18	115	142	71	45	22.5	30	15	40	32	13.5	9
Z Q U-A100X*BP W	390	354														
Z Q U-A160X*BP W	407	376	180	164		134	162	81	50	25	42	21	45	38	15	9
Z Q U-A250X*BP W	522	486	210	202		150	188	94	66	33	48	24	60	50	18	11
Z Q U-A400X*BP W	669	625	254	214	25	163	228	114	90	45	60	30	75	65	18	13



LEEMIN
黎明液压

4.连接法兰请用户参照下列尺寸加工

Please manufacture the connecting flange as follow



型 号 Model	尺寸 Size(mm)										法兰用“0”形圈 “0” ring for flange	法兰用螺钉 Screw for flange
	A	B	C	D	D1	D2	D3	d	E	d1		
$\overset{z}{Q}_w$ U-A250 × *FP	75	15	9	φ 50	$\phi 60 \begin{smallmatrix} 0 \\ -0.06 \end{smallmatrix}$	$\phi 54 \begin{smallmatrix} +0.2 \\ 0 \end{smallmatrix}$	φ 60	φ 74	$2.4 \begin{smallmatrix} 0 \\ -0.1 \end{smallmatrix}$	φ 6.7	φ 60 × 3.1	M6 × 25
$\overset{z}{Q}_w$ U-A400 × *FP	85			φ 65	$\phi 75 \begin{smallmatrix} 0 \\ -0.06 \end{smallmatrix}$	$\phi 70 \begin{smallmatrix} +0.2 \\ 0 \end{smallmatrix}$	φ 76	φ 94		φ 9	φ 75 × 3.1	M8 × 30
$\overset{z}{Q}_w$ U-A630 × *FP	115			φ 80	$\phi 90 \begin{smallmatrix} 0 \\ -0.07 \end{smallmatrix}$	$\phi 85 \begin{smallmatrix} +0.2 \\ 0 \end{smallmatrix}$	φ 91	φ 115		φ 11	φ 90 × 3.1	M10 × 30
$\overset{z}{Q}_w$ U-A800 × *FP	125			φ 90	$\phi 100 \begin{smallmatrix} 0 \\ -0.1 \end{smallmatrix}$	$\phi 98 \begin{smallmatrix} +0.2 \\ 0 \end{smallmatrix}$	φ 104	φ 125		φ 13	φ 100 × 3.1	M12 × 35
$\overset{z}{Q}_w$ U-A1000 × *FP	135	φ 100	$\phi 110 \begin{smallmatrix} 0 \\ -0.1 \end{smallmatrix}$	$\phi 108 \begin{smallmatrix} +0.2 \\ 0 \end{smallmatrix}$	φ 114	φ 135	φ 110 × 3.1					