



LEEMIN
黎明液压

MD系列中压管路过滤器

MD MIDDLE PRESSURE LINE FILTER SERIES

(一) 简介

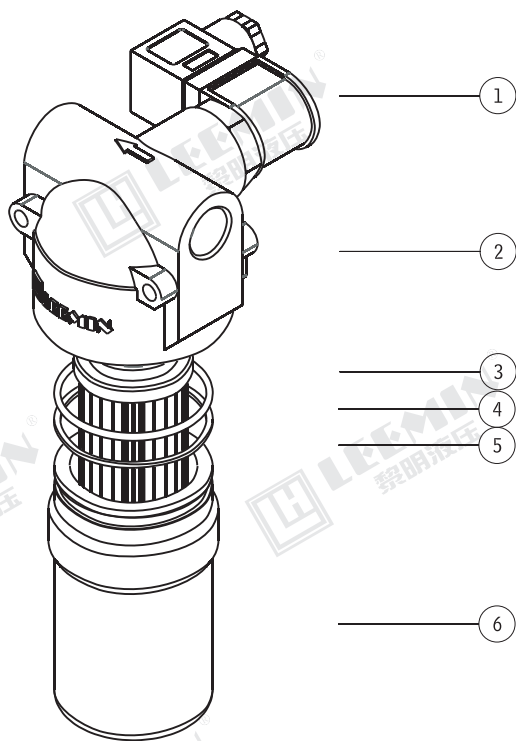
该系列过滤器，可安装于液压的管路上，具有重量轻，外形紧凑，安装方便等特点，工作压力为10MPa，且设有旁通阀，旁通阀开启压力为0.6MPa，并可选配发讯器，当滤芯污染堵塞到进出口压差为0.5MPa时，即发出开关信号，此时需要更换滤芯，已达到保护控制元件和执行元件的目的。

该过滤器滤芯采用玻璃纤维过滤材质，具有过滤精度高、同油能力大、原始压力损失小、纳污量大等优点，其过滤精度以绝对过滤精度标定，过滤比 β_3 、5、10、20 ≥ 200 ，过滤效率 $\eta \geq 99.5\%$ ，符合ISO标准。

INTRODUCTION

This series of filter can be installed in the hydraulic piping, with light weight, compact appearance, convenient for installation. Working pressure is 10 MPa, and equipped with by-pass valve and indicator, by-pass valve opening pressure is 0.6 MPa. When the filter differential pressure reach to 0.5 MPa, indicator will give signal, which need to replace filter element, incase to protect the control components and actuators.

The filter element material is glass fibre, with high filtration precision and large capacity, small pressure loss, the filter accuracy is in absolute filtration precision calibration, filter beta 3, 5, 10, 20, 200 or higher, filtration efficiency η reach to 99.5% or higher, in line with the ISO standards.

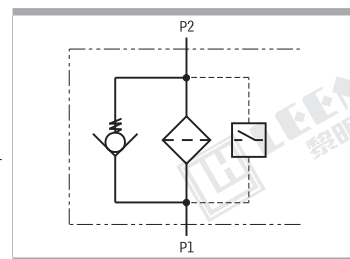


序号 Number	名称 Name	说明 Note
1	发讯器 Indicator	
2	滤头 Filter head	
3	滤芯 Element	易损件 Wearing Parts
4	O形密封圈 O-ring	易损件 Wearing Parts
5	垫圈 Gasket	易损件 Wearing Parts
6	壳体 Housing	

(二) 型号说明 MODEL CODE

MD	□	□	□	□	□
中压管路过滤器 Middle pressure line filter series					
A:带顶部安装形式A: With top mounted style 省略:普通安装形式Omit : Normal installation style					
BH:介质为水—乙二醇 Water-glycol 省略:介质为一般液压油Omit if use hydraulic oil					
E:电子模拟发讯器 Electronic analog indicator M:带CM-IA型发讯器 With CM-IA indicator C:带CS-VIA型发讯器 With CS-VIA indicator 省略:不带发讯器Omit if without indicator					
过滤精度 Filtration accuracy(μm)					
公称流量 Flow rate(L/min)					

注：用户订购过滤器需配【电子模拟发讯器】时，请与我公司技术部联系。

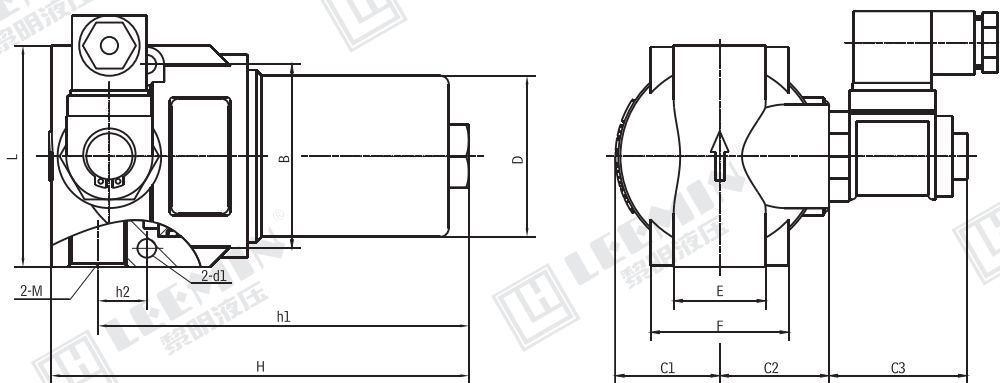




型 号 Model	通 径 Dia. (mm)	公称流量 Flow rate (L/min)	过滤精度 Filtr. (μm)	公称压力 Press. (MPa)	压力损失 Pressure loss(MPa)		发讯装置 功率 Indicator power	滤芯型号 Model of element
					Initial	Max		
MD□-30X*□ ^M _C	25	30	3、5、10、20	10	≤0.1	0.5	24V/48W	MDX-30X*
MD□-60X*□ ^M _C		60						MDX-60X*

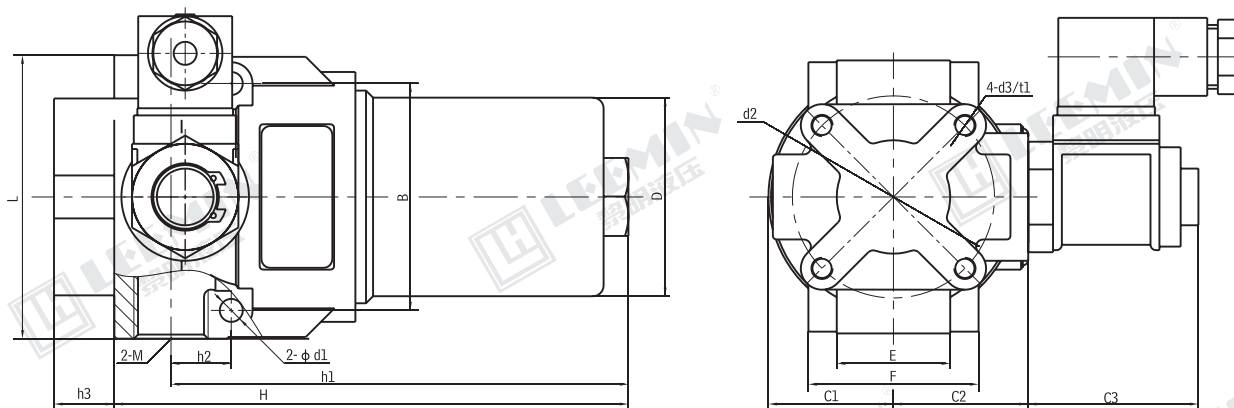
Note:*is represents filtration, flower rate 60L/min、filtration accuracy 10 μ m The model of the filter is MD-60X10, the model of element is MDX-60X10.

普通安装形式



型 号 Model	尺 寸 Size (mm)												
	H	h1	h2	M	d1	L	B	D	E	F	C1	C2	C3
MD-30X*C	146	130	17	2-G1/2	2-φ 6.5	77	64	56	32	48	36	38	52
MD-60X*C	232	216											

带顶部安装形式



型 号 Model	尺 寸 Size (mm)															
	H	h1	h2	h3	M	d1	d2	d3/t1	L	B	D	E	F	C1	C2	C3
MDA-30X*C	146	130	17	17	2-G1/2	2- φ 6.5	φ 57	M6/15	80	64	56	32	48	36	38	52
MDA-60X*C	232	216														