



RFC系列回油过滤器 RFC RETURN FILTER SERIES

(一) 简介

本过滤器用于液压系统回油精过滤，滤除液压系统中元件磨损产生的金属颗粒以及密封件的橡胶杂质等污染物，使流回油箱的油液保持清洁。

(二) 性能和特点

- 1、本过滤器直接安装于油箱盖板上，简化系统回油管路布置
- 2、可选配集成空滤(仅110~140规格)，简化油箱布置
- 3、可选配回油连接管(仅110~140规格)，确保低液位时回油口在液面以下
- 4、滤芯采用过滤精度高、通油能力大、原始压力损失小、纳污量大的玻璃纤维滤材，其过滤精度以绝对过滤精度标定，过滤比 β_3 、5、10、20 ≥ 200 ，符合ISO标准

INTRODUCTION

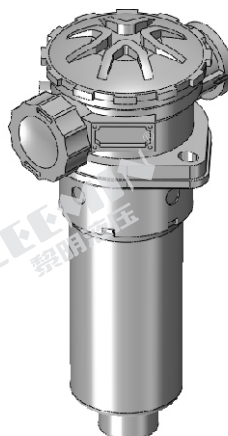
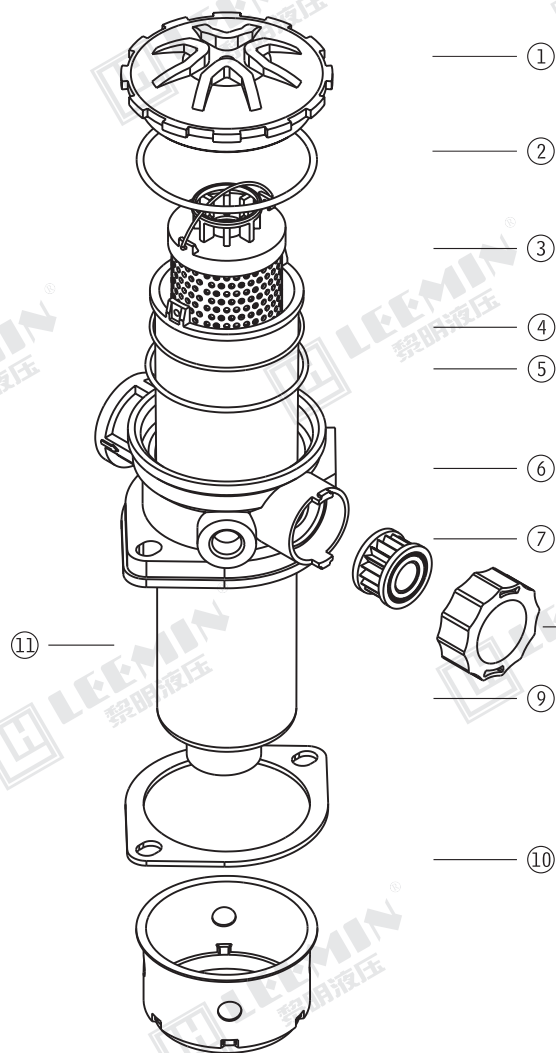
This filter is used for fine filtration of hydraulic system return oil, filtering out metal particles generated by component wear in the hydraulic system and rubber impurities in sealing components, etc., to keep the oil flowing back to the tank clean.

This filter is directly installed on the fuel tank cover plate, simplifying the arrangement of the system's return oil pipeline

Optional integrated air filter (only available in 110-140 specifications) to simplify fuel tank layout

Optional return oil connection pipe (only available in sizes 110~140) to ensure that the return throttle is below the liquid level when the liquid level is low

The filter element adopts glass fiber filter material with high filtration accuracy, large oil flow capacity, small original pressure loss, and large pollutant capacity. Its filtration accuracy is calibrated with absolute filtration accuracy, and the filtration ratios β_3 , 5, 10, and 20 ≥ 200 , which comply with ISO standards



序号 Number	名称 Name	说明 Note
1	滤盖 Cap	
2	O形密封圈 O-ring	易损件 Wearing Parts
3	滤芯 Element	易损件 Wearing Parts
4	O形密封圈 O-ring	易损件 Wearing Parts
5	O形密封圈 O-ring	易损件 Wearing Parts
6	滤头 Filter head	
7	空滤滤芯 Air filter element	易损件 Wearing Parts
8	空滤盖 Air filter cap	
9	密封垫 Seal	易损件 Wearing Parts
10	护套 Safety hood	
11	壳体 Housing	

RFC : - x - D

省略：不带空濾器 Omit if without breather filter

Technical drawing of the LHM10-10 hydraulic pump, showing side and top views with dimensions and a detail view of the inlet port.

Dimensions:

- Side View:** L (Total length), H (Height), D (Diameter).
- Top View:** A (Distance from center to top port), B (Distance from center to bottom port), C (Distance from center to side port), E (Total width), F (Total height).
- Detail View:** 3.3 (Width), 3° (Chamfer angle).

Labels:

- 黎明液压 (LIMING HYDRAULIC)
- 发讯器 (Signal generator)
- 进油口尺寸 (Inlet port dimensions)

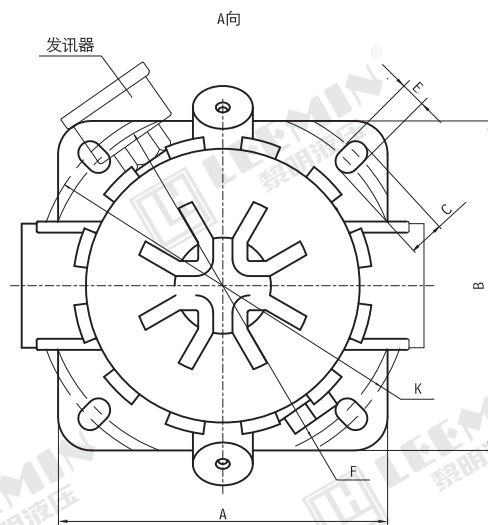
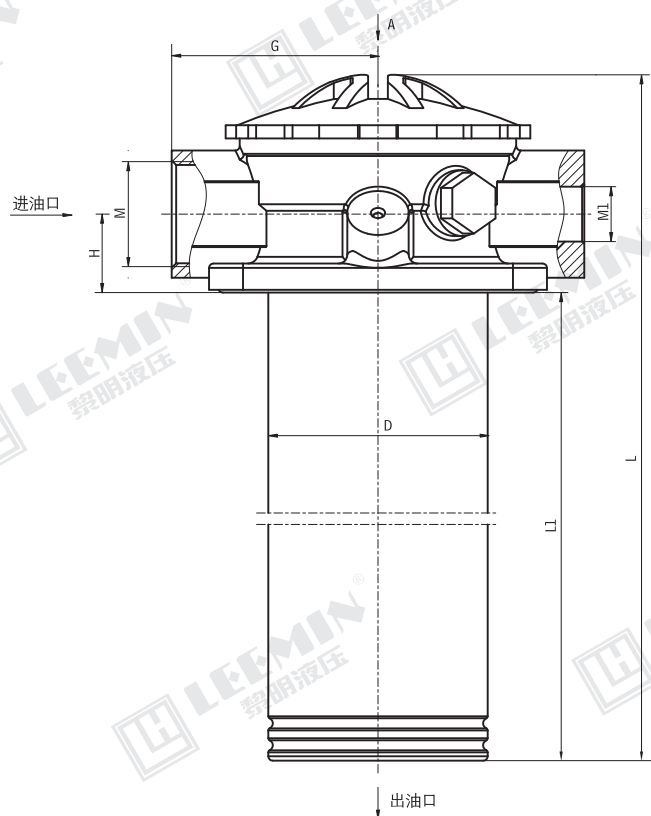
Notes:

- 需回油接管, 与我司技术部联系 (Need return oil pipe, contact our technical department)

型 号 Model	尺 寸 Size (mm)									
	A	B	C	D	E	F	H	L1	L	M
RFC - 110 × *	109.5	115.5	11	Φ85	145	138.5	35	205	290	1 5/16-12UN
RFC - 140 × *								270	355	



LEEMIN
黎明液压



型 号 Model	尺 寸 Size (mm)												
	A	B	C	D	E	F	G	H	K	L	L1	M	M1
RFC – 210 × *	154	154	17	φ100	11	φ164.5	94	34.5	φ175.5	346	250	G1 1/2	<div></div>
RFC – 270 × *										478	382		
RFC – 330 × *										567	471		
RFC – 210 × *D										346	250		
RFC – 270 × *D										478	382	G1	
RFC – 330 × *D										567	471		