



LEEMIN
黎明液压

CDZ系列充氮车 CDZ NITROGEN CHARGING CART

(一) 简介

CDZ型充氮车是用来对液压一囊式蓄能器、活塞式蓄能器、液压隔膜式蓄能器及其他高压容器进行充装并增加氮气压力的专用设备。通常氮气瓶直接对蓄能器充氮时，其最高充氮压力为13.5MPa。若蓄能器内所需预充的氮气压力超过13.5MPa，则使用本充氮车就可以实现。最高压力可达到42MPa。

该充氮车由液压系统、气路、电路三部分组成。液压系统的先导换向阀控制双向增压器不断往复运动，一气腔从氮气瓶吸入氮气，另一气腔将已吸入的氮气通过阀装置压入蓄能器或高压容器。当蓄能器内氮气压力达预调值时，电接点压力表发信号使液压系统停止工作。

INTRODUCTION

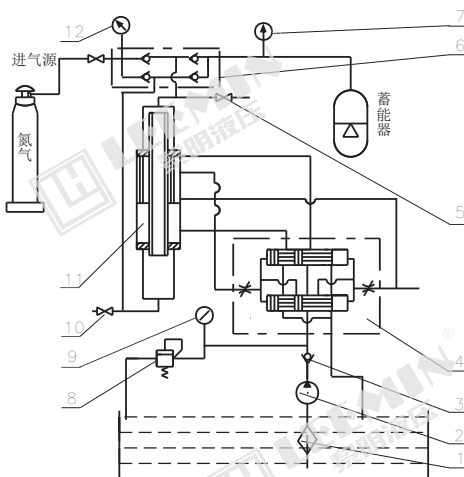
CDZ series nitrogen charging cart is the professional equipment applies to filling nitrogen or increasing the nitrogen pressure of hydraulics-bladder accumulator, piston accumulator, hydraulic diaphragm accumulators and other high-pressure container. Filling the nitrogen to the accumulator with nitrogen bottle directly, its highest nitrogen pressure is 13.5MPa. If the precharge pressure of the accumulator is over 13.5MPa, the nitrogen filling cart can achieved. The maximum pressure can up to 42MPa.

This type of nitrogen filling cart is composed by the three parts of the hydraulic system, pneumatic and circuit. Pilot reversing valve of the hydraulic system controls two-way forcing valve doing the reciprocating motion continuously, inhaled nitrogen from nitrogen bottles to the gas chamber, and the other gas chamber would press the nitrogen which have been inhaled through a valve into the storage device or pressure vessel. When accumulator pressure reaches the preset tone value of nitrogen, the hydraulic system stop to work when the pressure gauge for electric connection gives the signal.

(三) 技术参数 TECHNICAL DATA

型号 Model	氮气输入压力 Nitrogen working pressure (MPa)	最高输出压力 Max. output pressure (MPa)	油泵 Oil Pump		增压器 Pressure booster		重量 (kg)
			压力 Pressure (MPa)	流量 Flow rate (L/min)	增压比 Pressure ratio	增压次数(次/min) No. of Pressure boost cycles	
CDZ-25Y1	3.0-13.5	25	7	9	1 : 4	8	338
CDZ-35Y1		35			1 : 6	6	
CDZ-42Y1		42	8	14-16	1 : 7	7	

(四) 原理图 SCHEMATIC DIAGRAM



1. 滤油器 Fluid filter
2. 叶片泵 Propeller pump
3. 单向阀 Check valve
4. 先导换向阀 Pilot selector valve
5. 上放气阀 Upper exhaust valve
6. 气阀装置 Gas valve device
7. 电接点压力表 Electric contact pressure
8. 溢流阀 Overflow valve
9. 油压压力表 Fluid pressure gauge
10. 下放气阀 Lower exhaust valve
11. 双向增压器 Bi-direction supercharger
12. 进气压力表 Inflation pressure gauge

说明 Note:

- 1) 充氮车外形尺寸 (长800X宽600X高1500)mm.
- 2) 随充氮车提供;
CQJ型充气工具 (随长3000mm)一套;
气路的胶管 (长500mm)一根.
3. Hydrogen charging vehicle dimensions (L800XW600XH1500).
2. Supplied with the hydrogen vehicle:
CQJ type inflating device (pipe length 3000mm) one set;
Rubber pipe to the hydrogen source (L 1500mm) one pipe



(二) 型号说明

CDZ - - Y1

液控先导式 Hydraulic pilot ctype

最高充气压力: 25、35、42MPa;
Max charging pressure

充氮车 Nitrogen Charging Cart

(四) 使用及订货注意事项

1. 本产品仅适用于氮气，严禁使用氧气或其它可燃、腐蚀性气体。
2. 本产品出厂时已根据用户要求将充氮压力调定，可不必再进行调节，接上电源就可以使用，若要改变充氮压力，只要重新调整电接点压力的电触点位置即可。
3. 订货时除完整写明型号的所有代号外，也应标明实际使用的充氮压力。

ORDERING AND USING NOTE

1. Only use nitrogen, oxygen or other flammable, corrosive gas is prohibited to use.
2. It's no need to adjust the filling pressure, for the pressure has been set according to the requirement of the user's. Just connect the power you can use the product. If it's need to change the nitrogen pressure, please re-adjustment the electrical contacts of the electrical contact pressure gauge.
3. When ordering, indicate not only complete codes of the model, but also the actual working pressure..