



LEEMIN
黎明液压

XJF系列蓄能器用截止阀 XJF ACCUMULATOR STOP VALVE

(一) 简介 INTRODUCTION

XJF截止阀为蓄能器专用截止阀。主阀芯为液压平衡锥阀式，本阀专为蓄能器拆卸设计了排放油口。

阀的特点是开启力小、密封可靠、体积小、重量轻、结构简单、性能优良，可代替HIROSE、VALVE、IND-USTRY、COLTD公司的蓄能器截止阀。

XJF stop valve is specially designed for use in accumulator. The main plug is one for hydraulic balanced conical valve, with a special oil drain designed for accumulator.

The valve is characterized by small opening force, reliable sealing, small size, light weight, simple structure and good performance. It can be used as substitute for the accumulator stop valves of Hirose Valve Industry Co., Ltd.

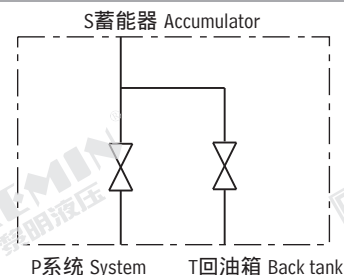
(二) 型号说明 MODEL CODE

-	/10
排放口口径 Drain Diameter: 10mm	
公称口径 Nominal Diameter (mm)	
XJF-P 油口焊接式法兰式 oil port welded type flange	
XJF-P 油口外螺纹式 oil port male thread	

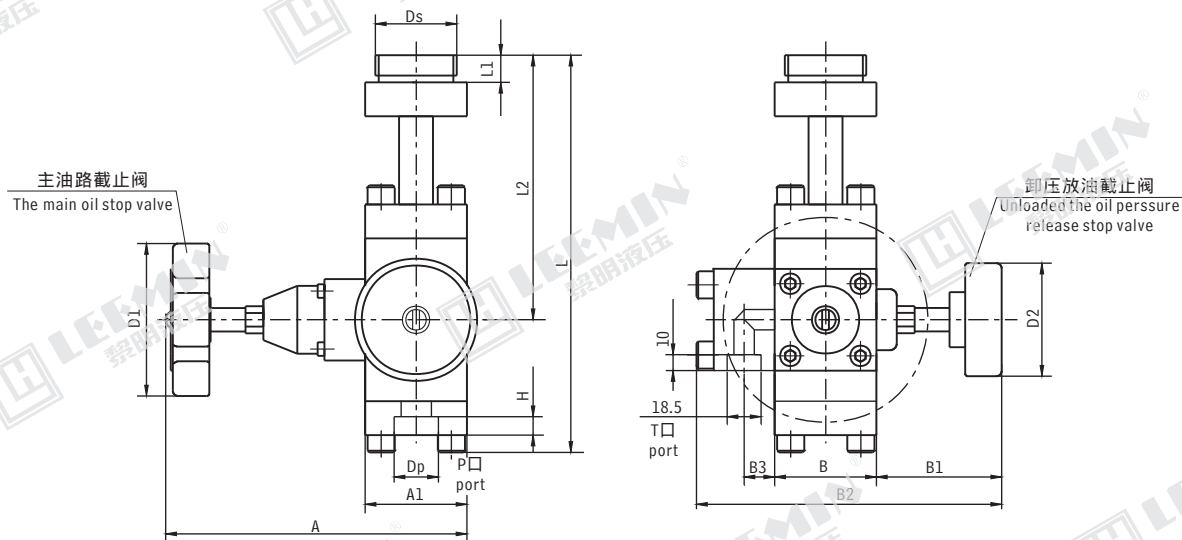


(三) 技术参数 TECHNICAL DATA

型号 Model	公称压力 Nominal press. (MPa)	公称口径 Nominal dia. (mm)	公称流量 Nominal Flow (L/min)	排放口口径 Drain dia. (mm)	配用蓄能器容积 Model matching accumulator (L)
XJF-10/10	31.5	10	40	10	1.6~6.3
XJF-20/10		20	100		
XJF-32/10		32	160		10~100
XJF-40/10		40	250		



(四) 外形尺寸 MOUNTING SIZE



型号 MODEL	A	A1	B	B1	B2	B3	L	L1	L2	D1	D2	H	Dp	Ds
XJF-10/10	58	170	58	67	163	15	236	15	163	125	90	9	18.5	M42X2
XJF-20/10							244					10	28.5	
XJF-32/10	85	226	76	74	197	18.5	295/299	26/30	201	160		16	43	M60X2/M72X2
XJF-40/10												20	50	