



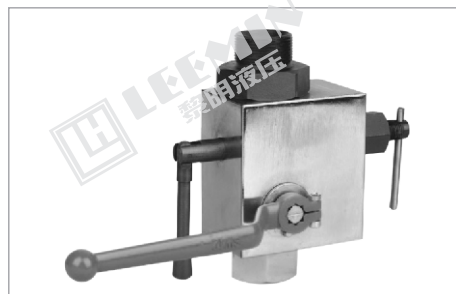
LEEMIN
黎明液压

AJF系列安全截止阀 AJF ACCUMULATOR STOP VALVE

(一) 简介 INTRODUCTION

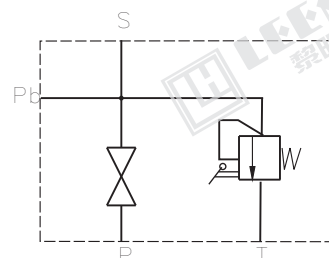
AJF型安全阀是一种蓄能器配套使用的新型液压元件，装在蓄能器与系统相连的管道之间，具有使蓄能器与系统通断、限压、放油卸压等保护蓄能器的功能。阀体上设有测压口，可检测蓄能器的工作压力。本阀组由球形截止阀、杠杆式调压卸压组合阀等组成，结构独特、操作方便。

AJF safety ball valve is a new type hydraulic parts matched with the accumulator, It's set between the accumulator and hydraulic system, this kind of valve has the functions of safety protection, flow cut off and load relief for the accumulator in the hydraulic system. A pressure testing port is set on the valve to check the working pressure of the accumulator, the combination valve is consist of ball stop valve, safety valve and relief valve and so on. It's characterized by convenient operation, reliable performance and compact design.

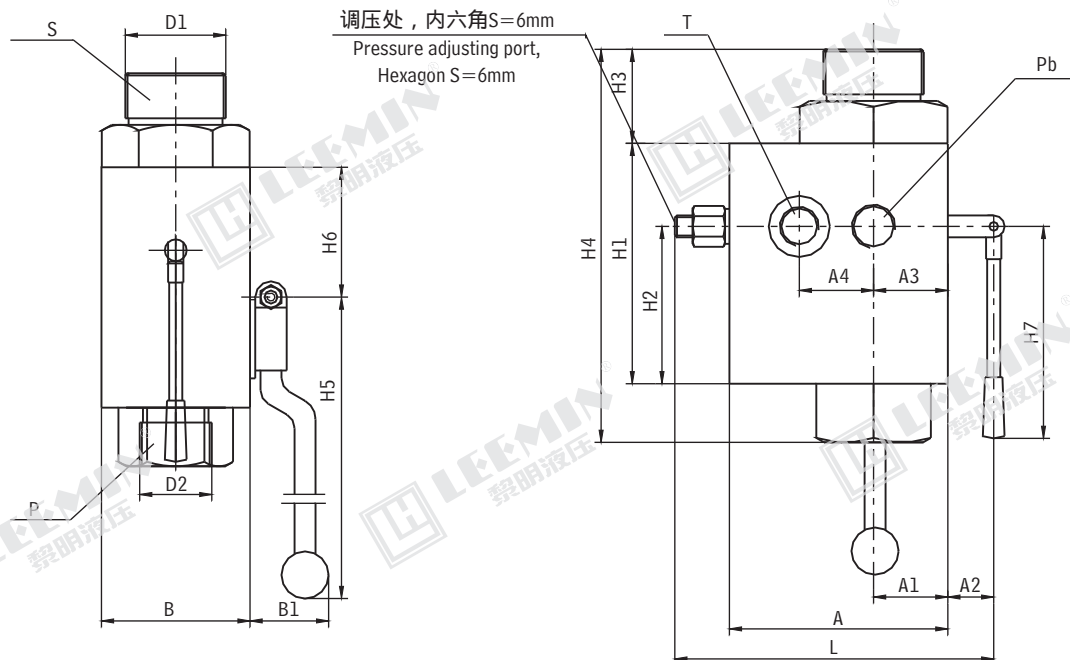


(二) 型号说明 MODEL CODE

AJF -	L	
		连接方式：螺纹连接 Connection Type: Straight thread connection
		公称通径 Nominal Diameter (mm)
		公称压力 Nominal Pressure
		H1:10MPa H2:20MPa H3:31.5MPa
		安全截止阀 Safety Stop Valve



(三) 外形尺寸 MOUNTING SIZE



型号	A	A1	A2	A3	A4	B	B1	H1	H2	H3	H4	H5	H6	H7	L	D1	D2	T	Pb	配用蓄能器容积
AJF-H*25L	100	34	26	34	34	68	52	110	72	43	179	175	78	94	171	M42X2	M33X2	M18X1.5		1.6L ~ 6.3L
AJF-H*40L	130	48	29	48	45	96	60	146	103	55	243	210	104	105	222	M60X2	M48X2	M22X1.5	M20X1.5	10L ~ 40L
AJF-H*50L	140	55	29	48	58	110	66	160	113	60	262	217	106	105	232	M72X2	M60X2	M22X1.5		63L ~ 100L

注：该阀组的卸压放油均由杠杆完成，它可在轴心平面360°范围内转动，用户按需任意决定其位置。

The safety ball valve realized releasing pressure and exhausting oil by operating the lever, it can turn around the center axis at 360 degree, so it's possible to make according to the requirement of the user's.