



LEEMIN
黎明液压

AQF系列蓄能器用安全球阀

AQF SAFETY BALL VALVES FOR ACCUMULATOR CONTROL

(一) 简介

AQF型安全球阀主要用于液压囊式蓄能器作为安全，断流和卸荷的蓄能器附件。安全阀可保持系统中的压力调定值。当压力超过调定值时，安全阀开启，防止系统过载，特别是封闭系统中的蓄能器更不可缺少，而防止外负荷的突然加大所造成系统的危害。

特点：结构紧凑，体积小，安全方便，操作简单。

AQF type safety ball valve, as a type of hydraulic bladder energy storage is used for safety, circuit break, and unloading. The safety valve may keep the system pressure at the set value. When the pressure overpasses the set value, the safety valve will open to avoid overload. It is especially important for the closure system to minimize the damage to the system resulting from sudden increase of load.

Feature: compact structure, small size, safe and convenience, simple operation.

(二) 型号说明 MODEL CODE

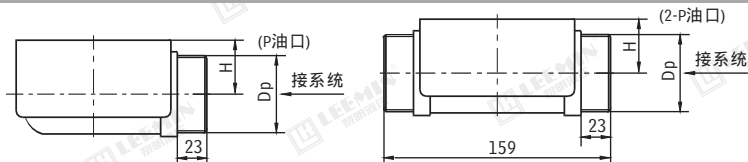
AQF -		- A /	
安全球阀 Safety ball valve		蓄能器接头螺纹 Accumulator joint thread	
L：直通式内螺纹 Straight through internal thread		M27X2、M42X2、M60X2、M72X2	
Ls：直角式外螺纹 Right Angle type external thread		直动形溢流阀 Straight overflow valve	
Lw：三通式外螺纹 Three-pass external thread		压力调节范围 Pressure regulating range	
公称通径 Nominal Diameter(mm)		H1：10MPa；H2：20MPa；H3：31.5MPa	

(三) 连接尺寸 MOUNTING SIZE

型号	公称流量(L/min)		连接尺寸(mm)			配蓄能器(L)	重量(kg)
	安全阀	球阀	H	Ds	Dp		
AQF-L25H*-A	40	100	31	M27X2	M33 × 2	1.6-10	29
AQF-LS25H*-A			42	M42X2	M42 × 2		
AQF-LW25H*-A							
AQF-L32H*-A	63	160	31	M42X2	M42 × 2	10-100	29.5
AQF-LS32H*-A			42	M60X2	M52 × 2		
AQF-LW32H*-A							
AQF-L40H*-A	100	250	31	M60X2	M48 × 2	10-100	30
AQF-LS40H*-A			42	M72X2	M60 × 2		
AQF-LW40H*-A							

直角外螺纹连接

三通外螺纹连接

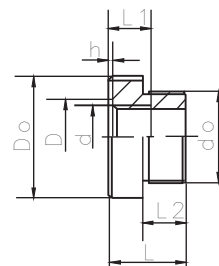
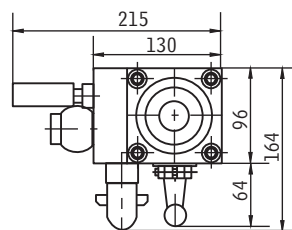
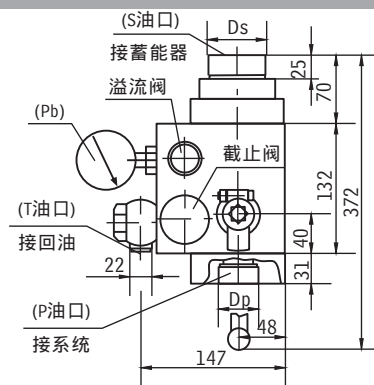
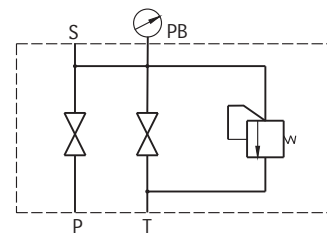
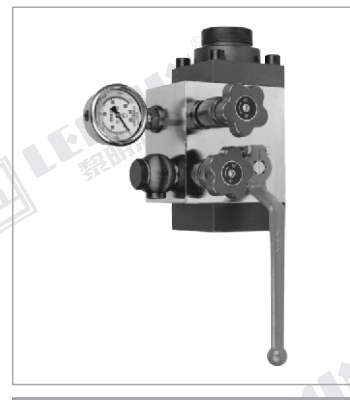


型号	d0	d	D	h	D0	L	L1	L2	重量(kg)
QF-L25	M60X2	M42X2	50	2.4	80	50	35	28	1.52
QF-L40	M72X2	M60X2	70		90	60	42	38	2.15

(四) 变径过渡接头 ADAPTOR

对于不同连接螺纹规格的蓄能器和安全球阀之间的连接，可利用变径过渡接头（补芯）解决。例如：连接螺纹为M72X2的蓄能器与32口径的安全球阀（S口螺纹M60X2）的连接，采用QF-L40接头即可。同理，各种蓄能器（包括进口的）和安全球阀（含其他系列的）之间的连接，都可采用此法。

The adaptor can help to connect the two different thread of accumulator to safety ball valve. For example, the thread of the accumulator connector: M72X2, the thread of the AQF safety ball valve: M60X2, the QF-L40 adaptor can help to connect them. In this way, all kind of the accumulator and safety ball valve can connect together.





LEEMIN
黎明液压

1. 调试、维修后投入使用时，必须将小截止阀拧紧。

2. 外螺纹是与焊接式螺母、焊接管、GB1235-76标准O形密封圈配套使用的

2. 工作压力为31.5MPa，公称直径32mm，P油口连接方式为直角外螺纹，蓄能器接口螺纹M60X2，则安全球阀型号是AQF-LS32H3-A/M60X2。若需要变径过渡接头（补芯）的，则补芯型号为：QF-L40。

1. Tightening the small stop valve when the safety ball valve is put into use after debugging or repair.

2. Male thread is matched with welded nut, welded pipe, and O ring (GB1235-76 Standard)

3. working pressure: 31.5MPa, the nominal diameter: 32mm, P port connector: right angle through make thread, the thread of the accumulator connect: M60X2, the model of this safety ball valve is AQF-LS32H3-A/M60X2. If the user need the adaptor, the model of this bushing is QF-L40.