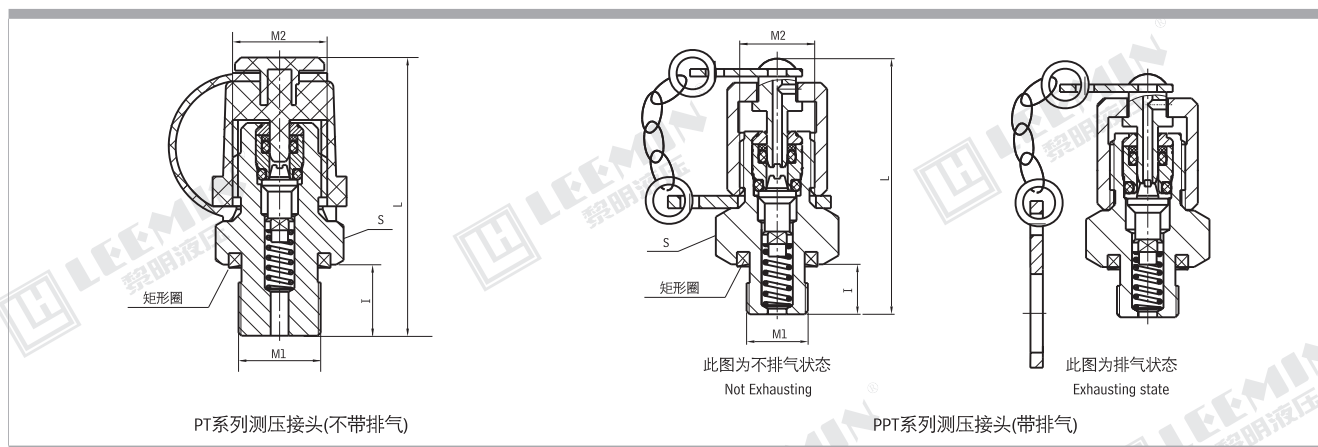




LEEMIN
黎明液压

PT系列微型高压测压接头 PT PRESSURE TESTING ADAPTER SERIES

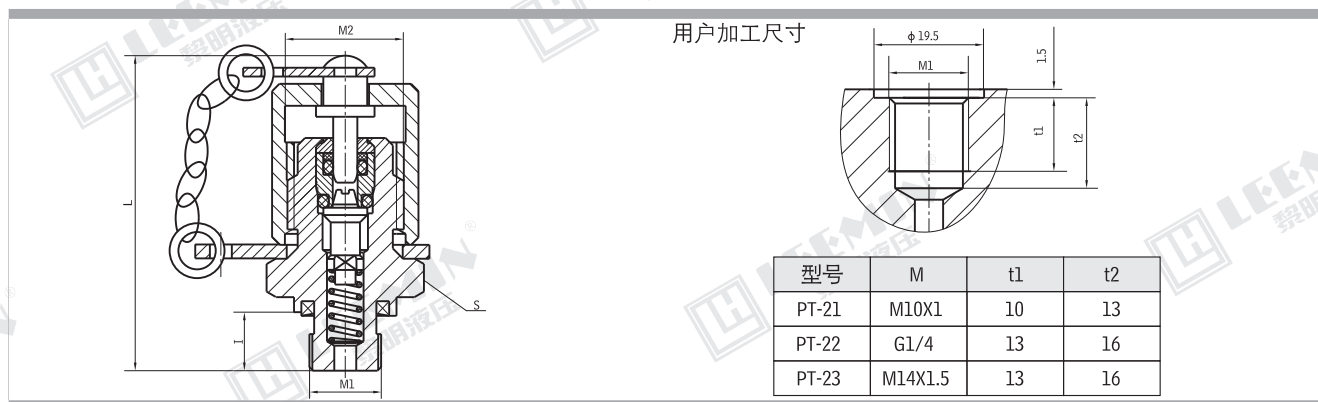


(一)PT系列微型测压接头(不带排气)

订货型号	原旧型号	M1	M2	L	I	S	配测压胶管接头型号
PT-1	PT-00	M10 × 1	M12 × 1.25	41	8	17	H1
PT-2	PT-00A1	M10 × 1	M16	42	8	19	H2
PT-3	PT-00A2/D1-3/M14 × 1.5	M14 × 1.5	M16	46	12	19	H2
PT-4	DI-3/M10 × 1	M10 × 1	M16	42	8	19	H2
PT-5	DI-3/M12 × 1.5	M12 × 1.5	M16	46	12	19	H2
PT-6	DI-3/M18 × 1.5	M18 × 1.5	M16	46	12	24	H2
PT-7	DI-3/G1/4	G1/4	M16	46	12	19	H2
PT-8	BZ	M12 × 1.5	M14 × 1.5	50	12	17	H3
PT-9	KF-1/M10 × 1	M10 × 1	M16 × 1.5	46	11.5	19	H4
PT-10	KF-1/M12 × 1.5	M12 × 1.5	M16 × 1.5	46	11.5	19	H4
PT-11	KF-1/M14 × 1.5	M14 × 1.5	M16 × 1.5	46	11.5	19	H4
PT-12	KF-1/M18 × 1.5	M18 × 1.5	M16 × 1.5	46	11.5	24	H4

(二)PT 系列微型测压接头(不带排气矩形圈密封)

订货型号	M1	M2	L	I	S	配测压胶管接头型号
PT-21	M10 × 1	M16	46.8	8	19	H2
PT-22	G1/4	M16	50.8	12	19	H2
PT-23	M14 × 1.5	M16	46.8	12	19	H2

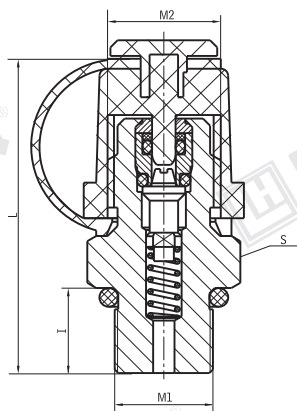




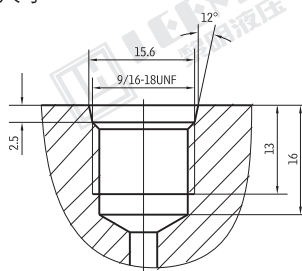
LEEMIN
黎明液压

(三)微型测压接头(不带排气0形圈密封)

订货型号	M1	M2	L	I	S	配测压胶管接头型号
DI-3/9/16-18UNF	9/16-18-UNF	M16	46.8	12	19	H2
KF-1/9/16-18UNF	9/16-18-UNF	M16 × 1.5	46.8	12	19	H4



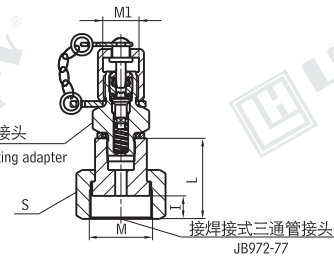
用户加工尺寸



(四)带排气测压接头

订货型号	原旧型号	M1	M2	L	I	S	配测压胶管接头型号
PPT-1	PT1-00	M10 × 1	M12 × 1.25	41	8	17	H1
PPT-2	PT1-00A1	M10 × 1	M16	42	8	19	H2
PPT-3	PT1-00A2	M14 × 1.5	M16	46	12	19	H2
PPT-5	—	M12 × 1.5	M16	46	12	19	H2

(五)PTF系列管道测压接头

	M	S	L	I	M1	可配测压胶管接头型号	订货型号
	M22 × 1.5	27	28	8	M12 × 1.25 M16	H1 H2	PTF-M1/M 例：测压接头的螺 纹为M16与管道相连接的 螺纹为M22 × 1.5则表示为 PTF-M16/M22 × 1.5
	M27 × 1.5	32	29	9			
	M30 × 1.5	36	30	10			
	M36 × 2	41	31	11			
	M42 × 2	50	35	15			
	M52 × 2	60	37	17			
	M60 × 2	70	39	19			

(六)PTS系列管路连接测压接头

Technical drawing of a pressure fitting assembly. The drawing shows a cross-section of the fitting with an external thread (外接管) and a central threaded hole. Dimensions are indicated: L (total length), h (height), and d (diameter). The drawing also shows a cross-section of the fitting with a central threaded hole and a central threaded hole. The drawing is labeled with GB3759-83 and GB3764-83.

型 号	L	h	d	所配测压接头型号
PTS-6	69.5	54	6	PT-3
PTS-8	70.5		8	
PTS-10	72.5		10	
PTS-12			12	
PTS-14	75.5		14	
PTS-16			16	
PTS-18			18	
PTS-20	91.5	55	20	
PTS-22	93.5	58	22	
PTS-25	96.5		25	
PTS-28	97.5		28	